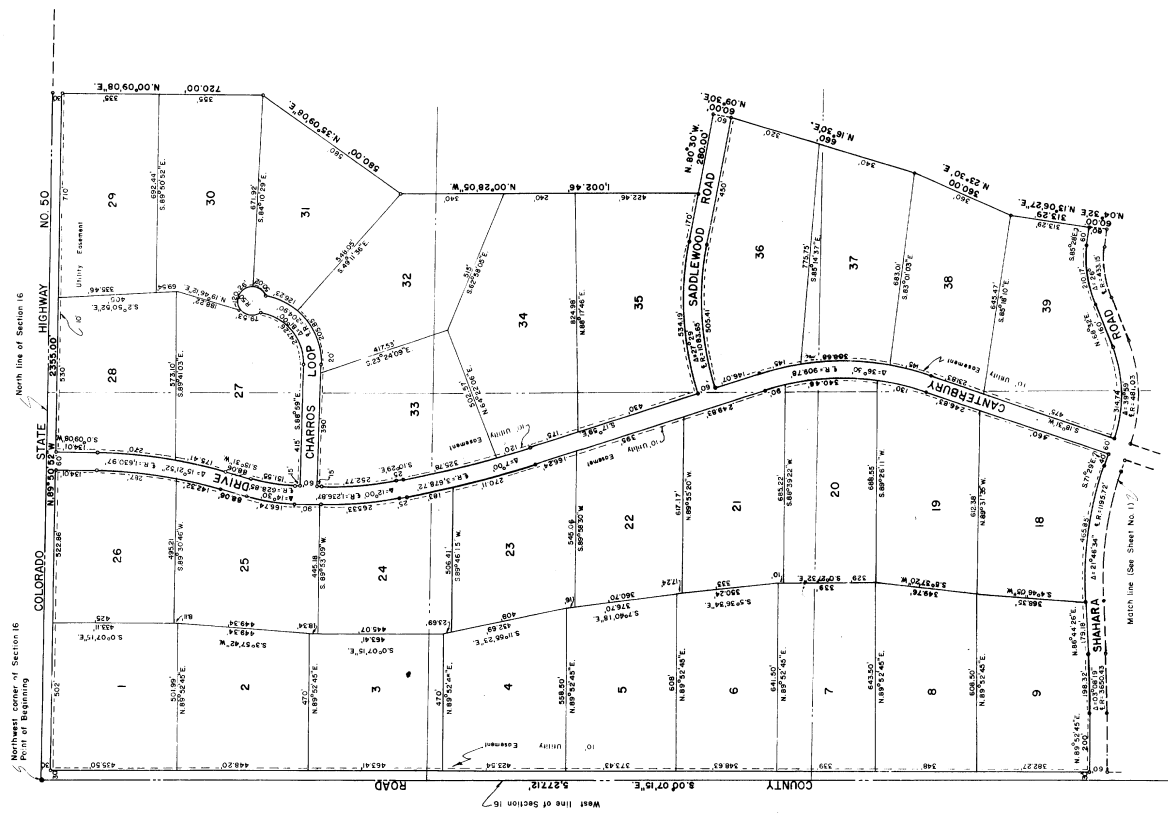


CANTERBURY WEST

EL PASO COUNTY, COLORADO



Scale 1" = 200'
Sheet 2 of 2

NOTE:
It shall be the responsibility of the individual property owners to furnish their own Water and Sanitation.
All easements are in dotted line and of width as shown.
All tracts contain 5 Acres or more.
All bearings are relative to assumed bearing as shown along West line of Section 16.
See Sheet 1 of 2 for dedication.